

# LOWER TWEED RIVER DEPTHS AS AT 19-24 JULY 2005

## NOTES:

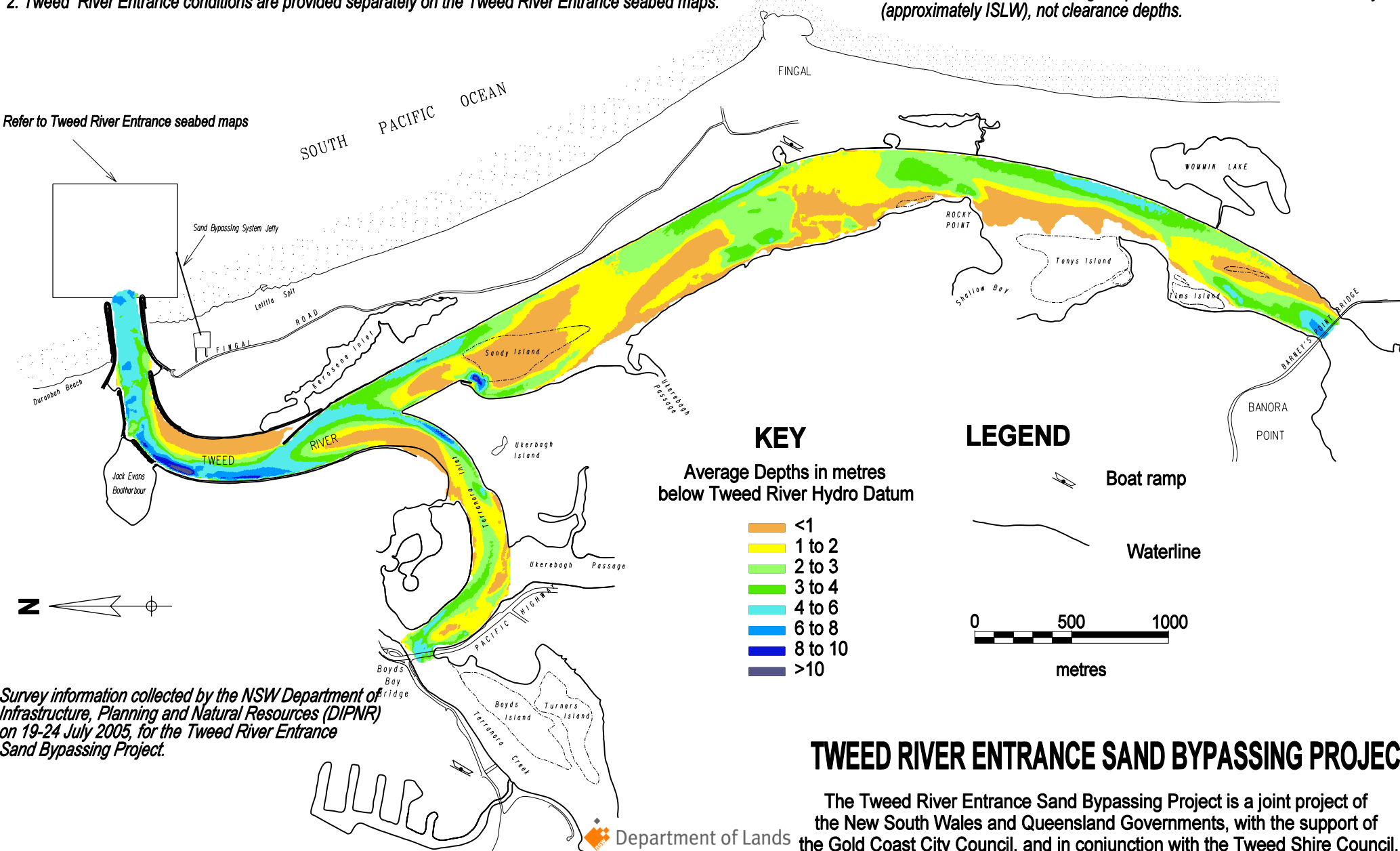
1. Surveys are undertaken to monitor changes in the lower river shoals as part of the Tweed River Entrance Sand Bypassing Project's environmental monitoring program.
2. Tweed River Entrance conditions are provided separately on the Tweed River Entrance seabed maps.

## WARNINGS:

Channel locations and riverbed conditions may change and caution should be used when navigating this river.

Riverbed contours show average depths in metres below Tweed River Hydro Datum (approximately ISLW), not clearance depths.

Refer to Tweed River Entrance seabed maps



Survey information collected by the NSW Department of Infrastructure, Planning and Natural Resources (DIPNR) on 19-24 July 2005, for the Tweed River Entrance Sand Bypassing Project.

## TWEED RIVER ENTRANCE SAND BYPASSING PROJECT

The Tweed River Entrance Sand Bypassing Project is a joint project of the New South Wales and Queensland Governments, with the support of the Gold Coast City Council, and in conjunction with the Tweed Shire Council.



Department of Lands