

LOWER TWEED RIVER DEPTHS AS AT 6-10 SEPTEMBER 2003

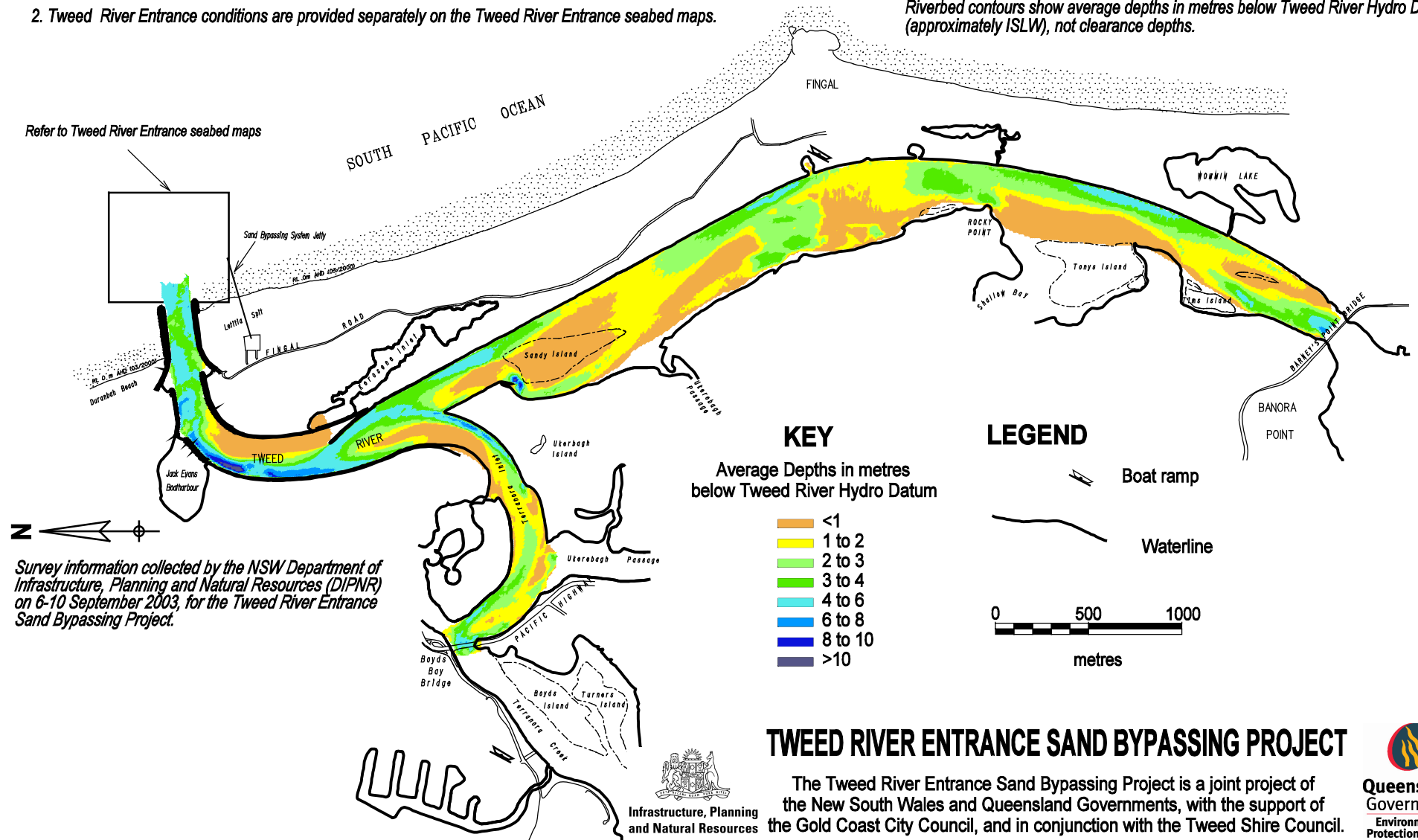
NOTES:

1. Surveys are undertaken to monitor changes in the lower river shoals as part of the Tweed River Entrance Sand Bypassing Project's environmental monitoring program.
2. Tweed River Entrance conditions are provided separately on the Tweed River Entrance seabed maps.

WARNINGS:

Channel locations and riverbed conditions may change and caution should be used when navigating this river.

Riverbed contours show average depths in metres below Tweed River Hydro Datum (approximately ISLW), not clearance depths.



Survey information collected by the NSW Department of Infrastructure, Planning and Natural Resources (DIPNR) on 6-10 September 2003, for the Tweed River Entrance Sand Bypassing Project.