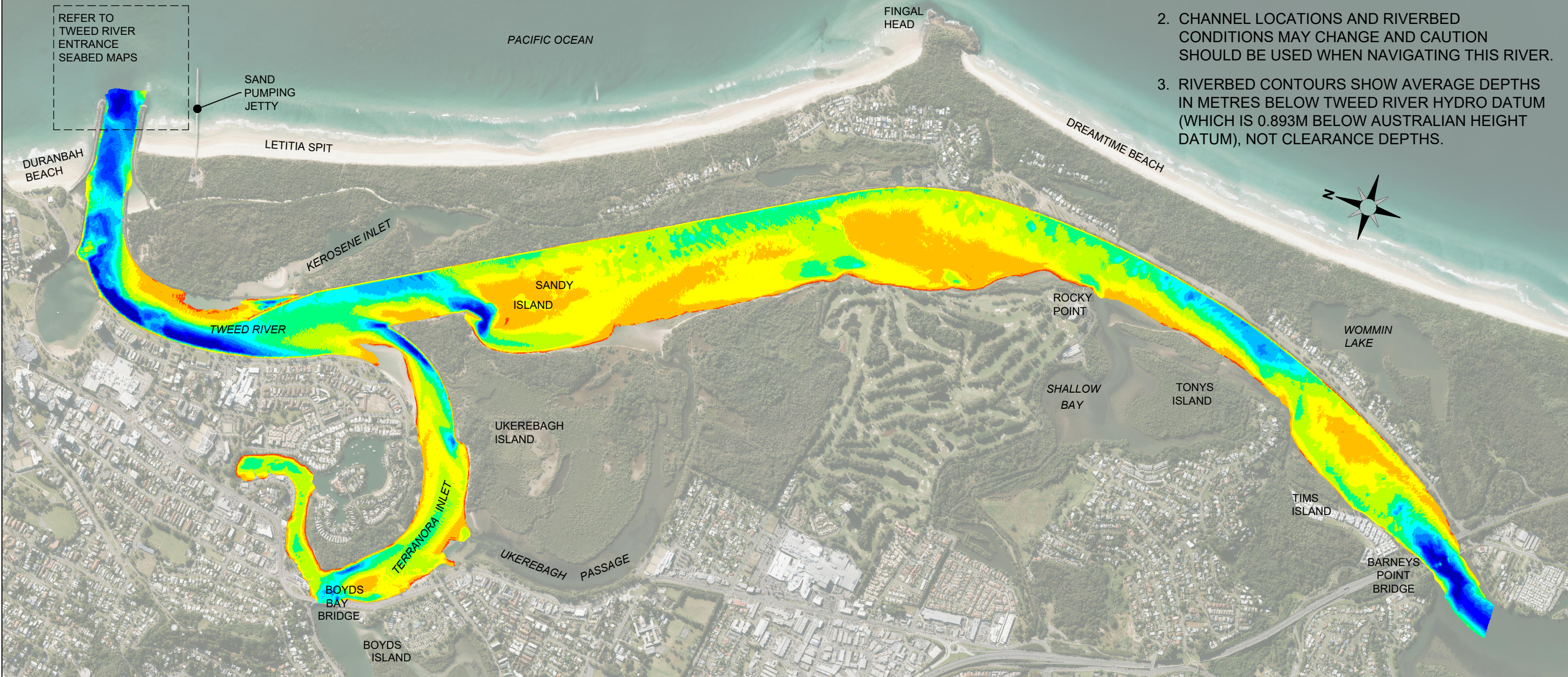


LOWER TWEED RIVER DEPTHS



- WARNINGS:**
1. DEPTH SURVEY UNDERTAKEN IN AUGUST 2022.
 2. CHANNEL LOCATIONS AND RIVERBED CONDITIONS MAY CHANGE AND CAUTION SHOULD BE USED WHEN NAVIGATING THIS RIVER.
 3. RIVERBED CONTOURS SHOW AVERAGE DEPTHS IN METRES BELOW TWEED RIVER HYDRO DATUM (WHICH IS 0.893M BELOW AUSTRALIAN HEIGHT DATUM), NOT CLEARANCE DEPTHS.

TWEED SAND BYPASSING:

TWEED SAND BYPASSING IS A JOINT PROJECT OF THE NEW SOUTH WALES AND QUEENSLAND GOVERNMENTS, WITH THE SUPPORT OF THE CITY OF GOLD COAST, AND IN CONJUNCTION WITH THE TWEED SHIRE COUNCIL.

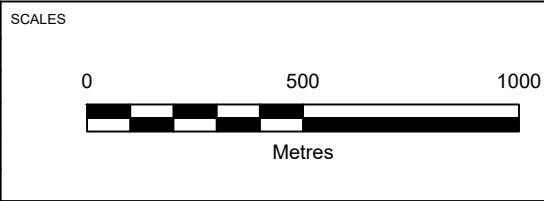
KEY:

INDICATIVE DEPTH IN METRES (REFER TO WARNING NOTES)		
<div></div> < 0	<div></div> 3 TO 4	<div></div> 7 TO 8
<div></div> 0 TO 1	<div></div> 4 TO 5	<div></div> 8 TO 9
<div></div> 1 TO 2	<div></div> 5 TO 6	<div></div> 9 TO 10
<div></div> 2 TO 3	<div></div> 6 TO 7	<div></div> > 10

NOTES:

1. SURVEYS ARE UNDERTAKEN TO MONITOR CHANGES IN THE LOWER RIVER SHOALS AS PART OF TWEED SAND BYPASSING'S ENVIRONMENTAL MONITORING PROGRAM.
2. TWEED RIVER ENTRANCE CONDITIONS ARE PROVIDED SEPARATELY ON THE TWEED RIVER ENTRANCE SEABED MAP.
3. SURVEY INFORMATION COLLECTED BY GPS & HYDROGRAPHIC SURVEYS FOR TWEED SAND BYPASSING.

REVISION	DATE	REV	DESCRIPTION	DRAWN	CHK
	2023-09-18	REV0	INITIAL ISSUE	MH	MH



TWEED SAND

BYPASSING

LOWER TWEED RIVER

ESTUARY BATHYMETRY

AUGUST 2022

DRAWING NUMBER

SUP-DWG-9003

DRAWING PRODUCED BY:

HYDROSPHERE CONSULTING

WWW.HYDROSPHERE.COM.AU