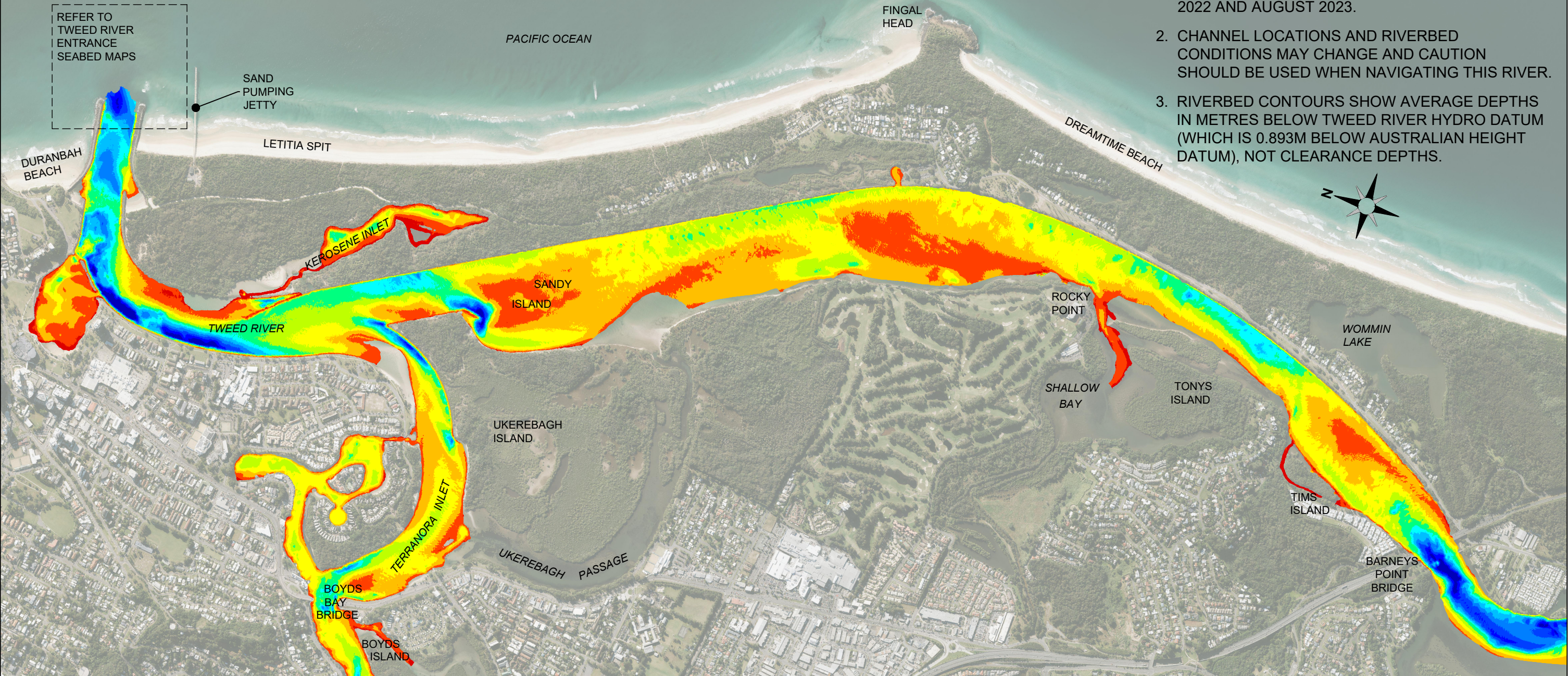


LOWER TWEED RIVER DEPTHS



- WARNINGS:**
- 1. DEPTH SURVEY UNDERTAKEN BETWEEN AUGUST 2022 AND AUGUST 2023.
 - 2. CHANNEL LOCATIONS AND RIVERBED CONDITIONS MAY CHANGE AND CAUTION SHOULD BE USED WHEN NAVIGATING THIS RIVER.
 - 3. RIVERBED CONTOURS SHOW AVERAGE DEPTHS IN METRES BELOW TWEED RIVER HYDRO DATUM (WHICH IS 0.893M BELOW AUSTRALIAN HEIGHT DATUM), NOT CLEARANCE DEPTHS.

TWEED SAND BYPASSING:

TWEED SAND BYPASSING IS A JOINT PROJECT OF THE NEW SOUTH WALES AND QUEENSLAND GOVERNMENTS, WITH THE SUPPORT OF THE CITY OF GOLD COAST, AND IN CONJUNCTION WITH THE TWEED SHIRE COUNCIL.

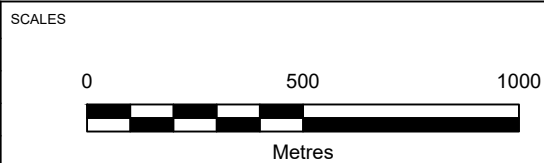
KEY:

INDICATIVE DEPTH IN METRES
(REFER TO WARNING NOTES)

< 0	3 TO 4	7 TO 8
0 TO 1	4 TO 5	8 TO 9
1 TO 2	5 TO 6	9 TO 10
2 TO 3	6 TO 7	> 10

- NOTES:**
- 1. SURVEYS ARE UNDERTAKEN TO MONITOR CHANGES IN THE LOWER RIVER SHOALS AS PART OF TWEED SAND BYPASSING'S ENVIRONMENTAL MONITORING PROGRAM.
 - 2. TWEED RIVER ENTRANCE CONDITIONS ARE PROVIDED SEPARATELY ON THE TWEED RIVER ENTRANCE SEABED MAP.
 - 3. SURVEY INFORMATION COLLECTED AS PART OF THE NORTHERN RIVERS RESILIENCE INITIATIVE.

REVISION	DATE	REV	DESCRIPTION	DRAWN	CHK
	2024-07-18	REV0	INITIAL ISSUE	MH	MH



TWEED SAND BYPASSING

**LOWER TWEED RIVER
ESTUARY BATHYMETRY
AUGUST 2022 - AUGUST 2023**

DRAWING NUMBER
SUP-DWG-9004

DRAWING PRODUCED BY:
HYDROSPHERE CONSULTING
WWW.HYDROSPHERE.COM.AU