

TWEED SAND BYPASSING

ENVIRONMENTAL MONITORING SUMMARY – MAY 2021

1. SAND PUMPING & DREDGING

- 30,832 m³ was pumped to Snapper Rocks East.
- 19,905 m³ was pumped to Duranbah.
- 0 m³ of sand was dredged.

Sand Delivery May 2021

Pumped: 50,737 m³

Dredged: 0 m³

Total: 50,737 m³

The number of days sand was pumped this month = 16

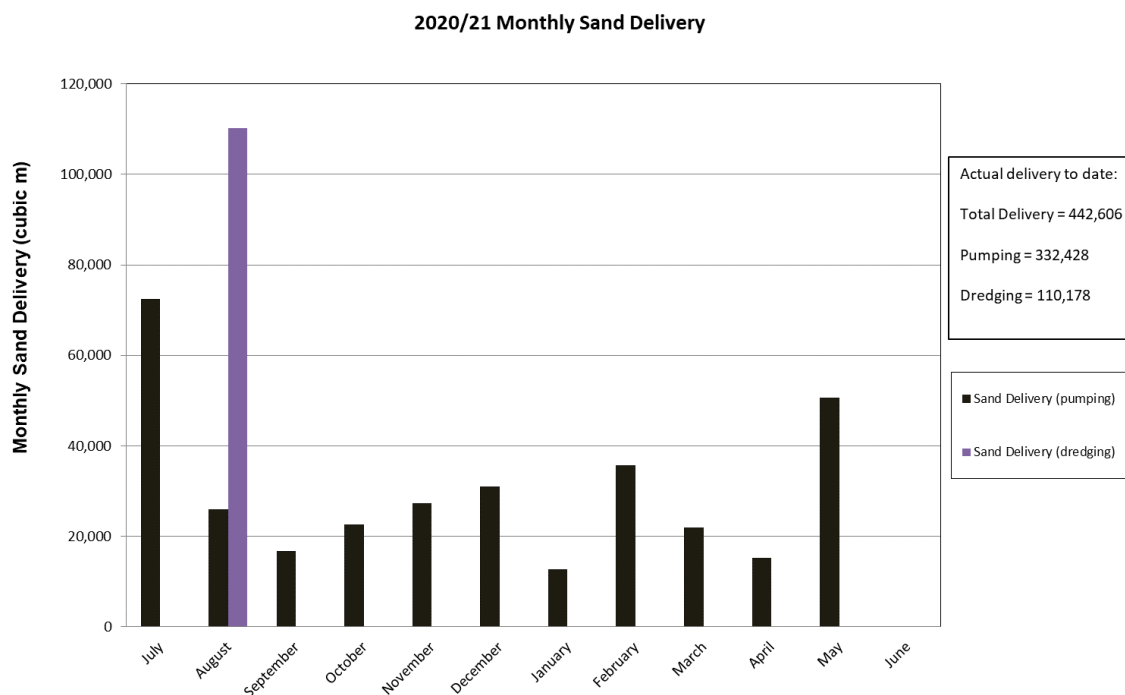
Stage II Sand Delivery May 2000 to date

Pumped: 10,212,689 m³

Dredged*: 2,582,052 m³

Total*: 12,794,741 m³

* This Includes 22,870 m³ of sand delivered by dredge to Palm Beach between June 2005 and September 2005



May 2021

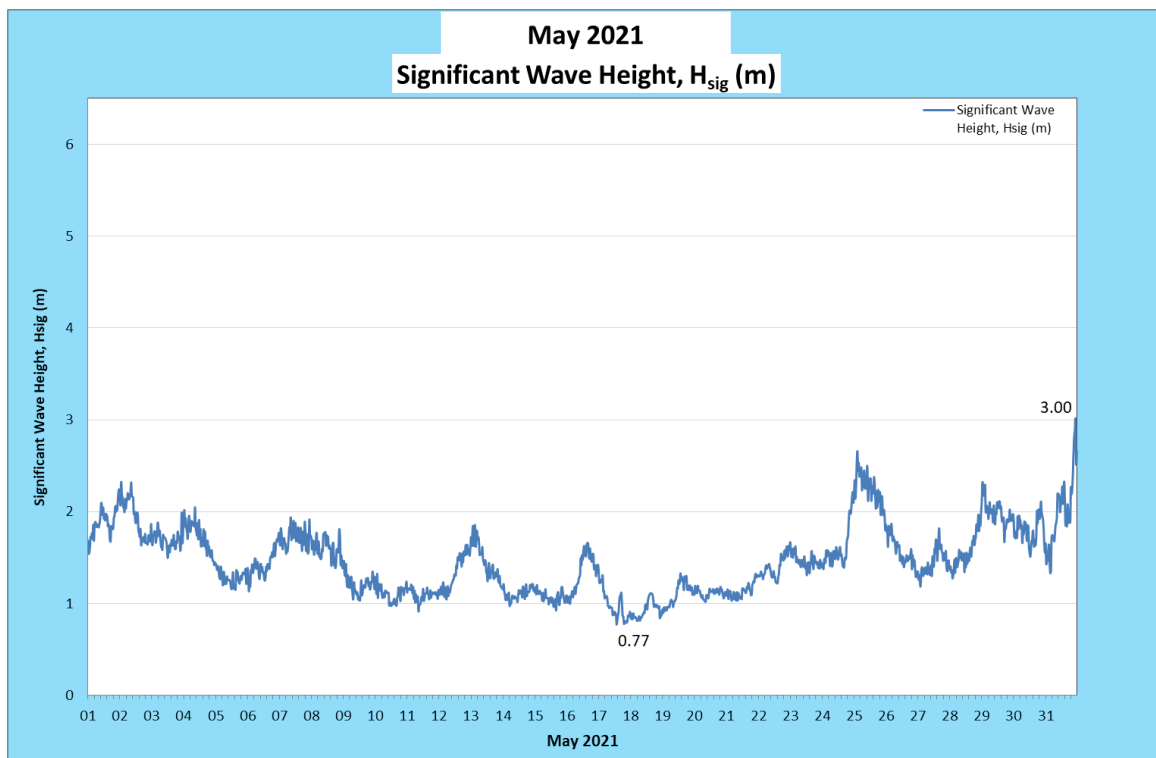
TWEED SAND BYPASSING

2. WAVE CONDITIONS

Significant wave heights (H_{sig}) were generally moderate with swell picking up toward the end of the month. Wave directions were generally from the east and NNW over the month.

- Minimum H_{sig} : 0.77 m on 17 May 2021
- Maximum H_{sig} : 3.00 m on 31 May 2021
- Number of days where $H_{sig} < 1$ m at some point: 8
- Number of days where $H_{sig} > 2$ m at some point: 8

Note: H_{sig} is defined as the average of the highest one-third of waves recorded over a period of approximately 30 minutes



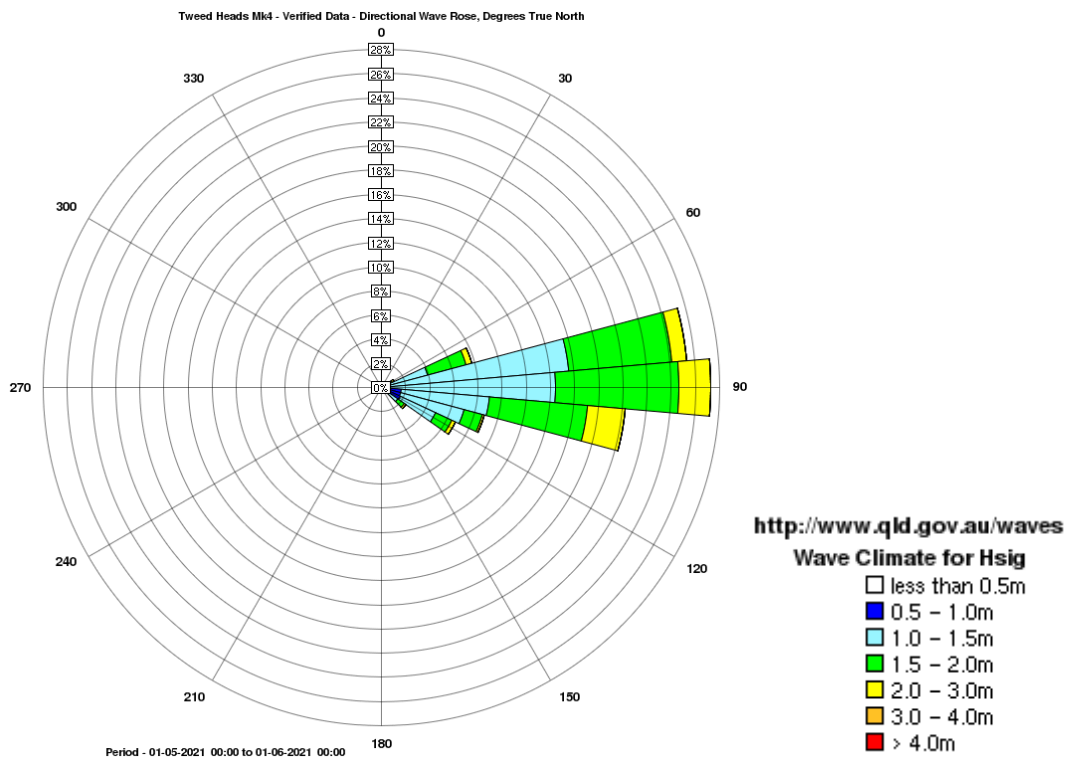
(Source: Tweed Heads Waverider buoy; Queensland Government)

In January 2020 TSB commissioned the deployment of another Waverider buoy in the Tweed region. The Tweed Offshore Waverider buoy was deployed in approximately 60 m water depth to the east and adjacent to Kingscliff and Dreamtime Beaches. The purpose of the Tweed Offshore buoy is to observe and assess changes in wave climate at the Tweed Heads buoy due to the presence of the Danger Reefs and Cook Island.

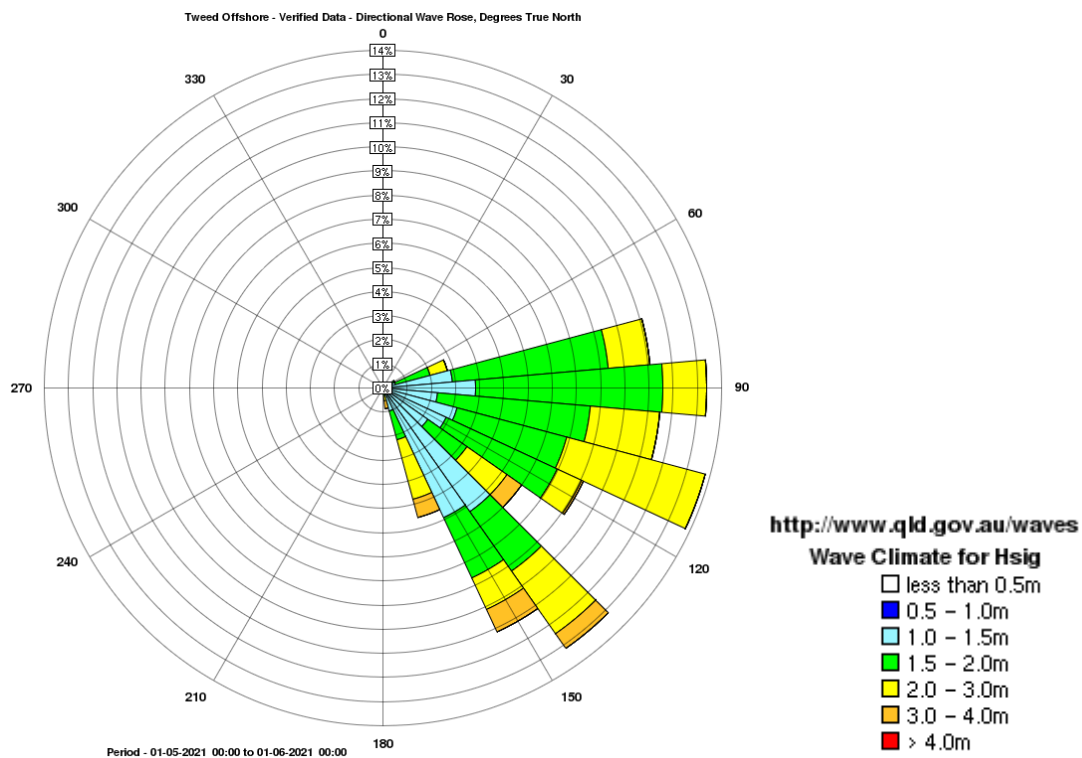
A link to data recorded by the Tweed Heads and Tweed Offshore Waverider buoys is available at: <http://www.qld.gov.au/waves>

TWEED SAND BYPASSING

NEARSHORE WAVE DIRECTION



OFFSHORE WAVE DIRECTION

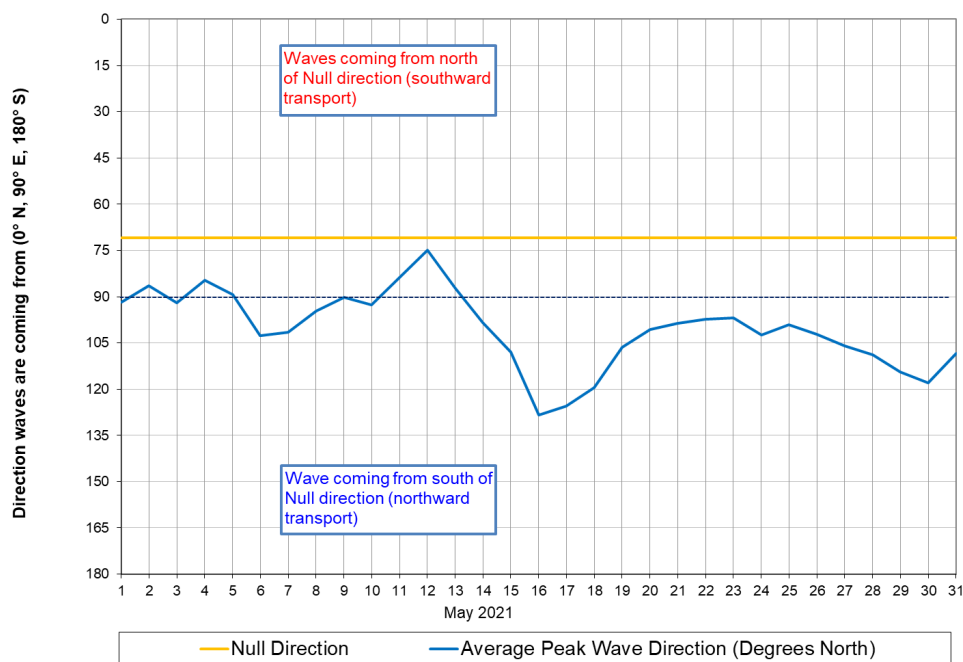
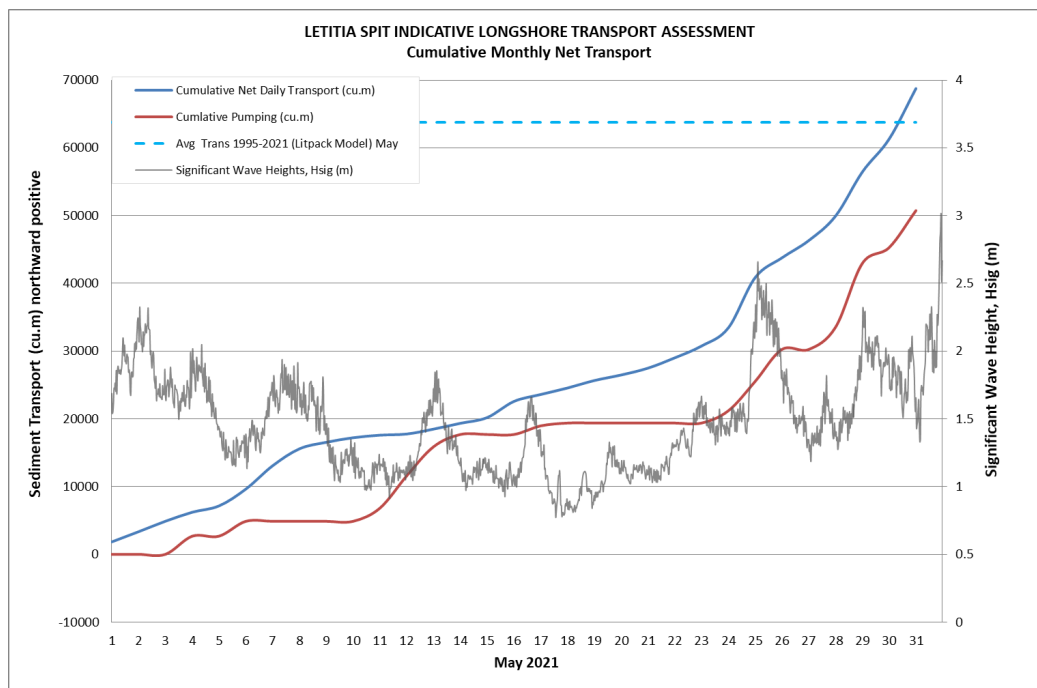


TWEED SAND BYPASSING

3. INDICATIVE LONGSHORE TRANSPORT

The first graph below is based on simplified sediment transport modelling and is indicative only. The second graph indicates the wave direction in relation to the shoreline null direction (a wave direction coming from south of this line generally results in northward transport of sand).

In May 2021 the estimated natural sand transport moving north towards the Tweed River entrance was calculated to be in the order of 69,000 cubic metres. This result is 108 per cent of the average estimated sand transport quantity of approximately 64,000 m³ for the month of May.

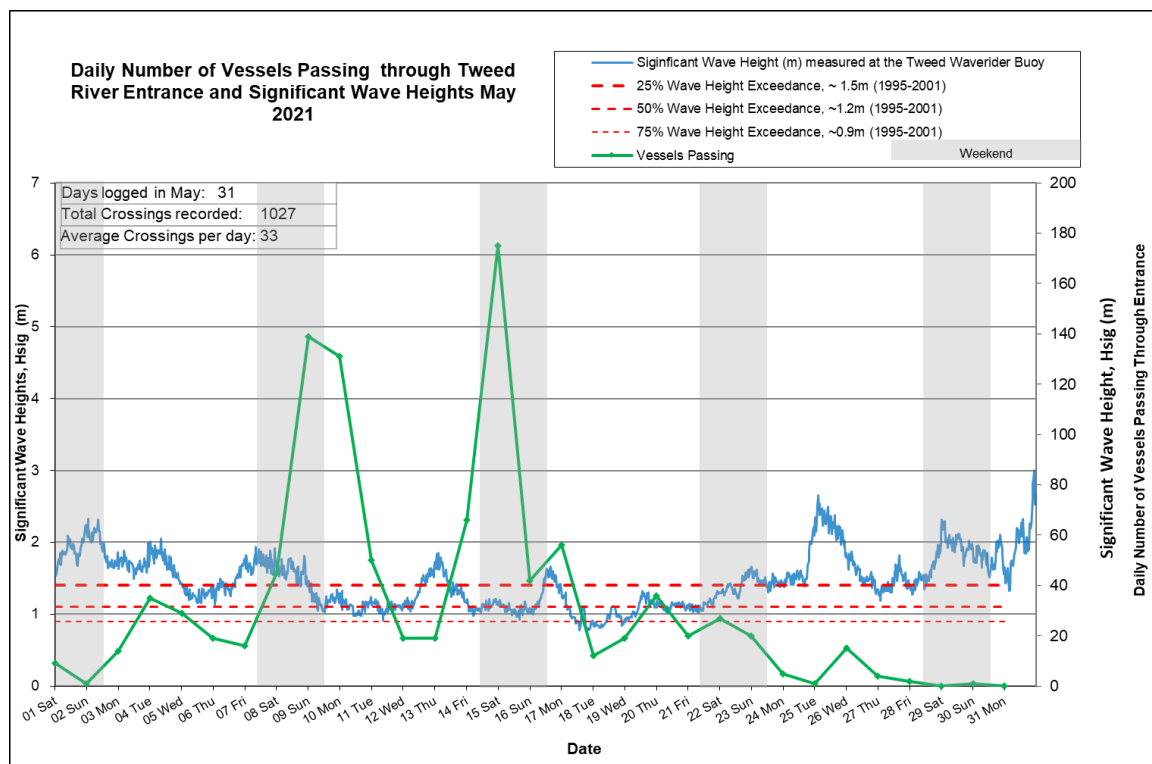
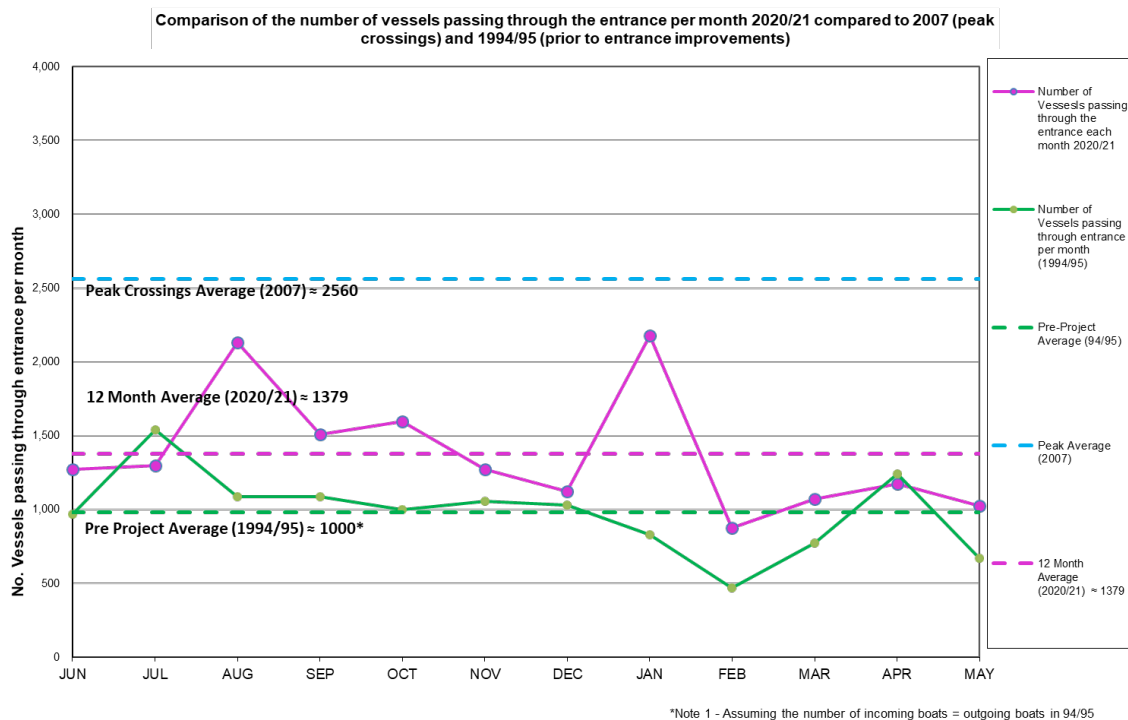


May 2021

TWEED SAND BYPASSING

4. TWEED RIVER ENTRANCE USAGE

A total of 1,027 Tweed River entrance vessel crossings were recorded for the month (54 per cent of the May average (2002–2021)).



May 2021

TWEED SAND BYPASSING

Date May 2021	Navigation Rating					Number of Crossings
	Impassable < - - - - > Good					
	Impassable	Difficulty Encountered	Some Difficulty Encountered	Relatively Good Crossing	Good Conditions	
	1	2	3	4	5	
1						9
2						1
3						14
4						35
5						29
6						19
7						16
8						45
9						139
10						131
11						50
12						19
13						19
14						66
15						175
16						42
17						56
18						12
19						19
20						36
21						20
22						27
23						20
24						5
25						1
26						15
27						4
28						2
29						0
30						1
31						0
					Total:	1,027

Marine Rescue NSW - Monitoring Results (Not including trawlers)

 Weekends

Source: Marine Rescue NSW, Point Danger