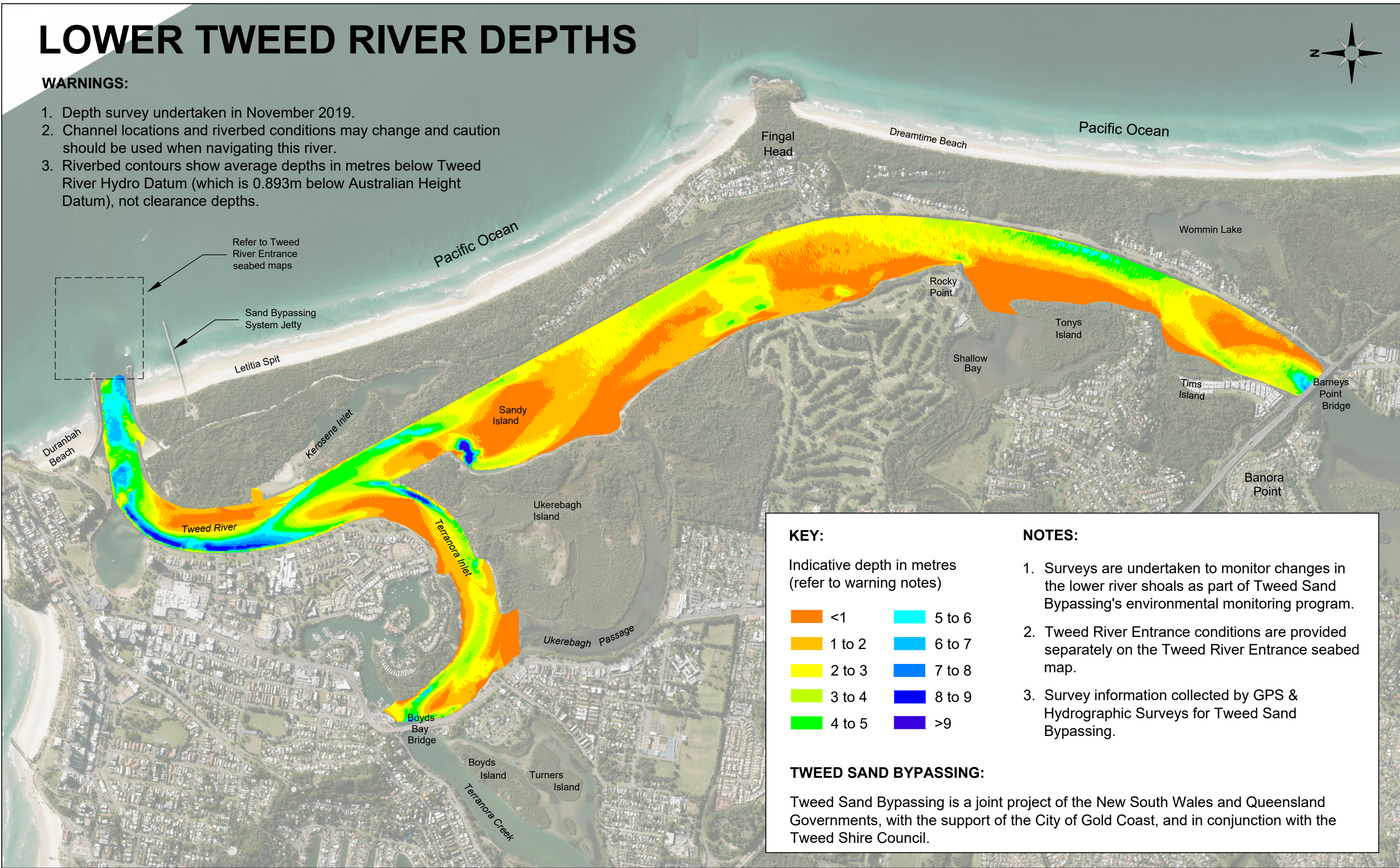


LOWER TWEED RIVER DEPTHS


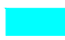






WARNINGS:

1. Depth survey undertaken in November 2019.
2. Channel locations and riverbed conditions may change and caution should be used when navigating this river.
3. Riverbed contours show average depths in metres below Tweed River Hydro Datum (which is 0.893m below Australian Height Datum), not clearance depths.



KEY:

Indicative depth in metres
(refer to warning notes)

	<1		5 to 6
	1 to 2		6 to 7
	2 to 3		7 to 8
	3 to 4		8 to 9
	4 to 5		>9

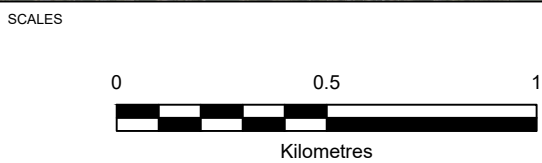
NOTES:

1. Surveys are undertaken to monitor changes in the lower river shoals as part of Tweed Sand Bypassing's environmental monitoring program.
2. Tweed River Entrance conditions are provided separately on the Tweed River Entrance seabed map.
3. Survey information collected by GPS & Hydrographic Surveys for Tweed Sand Bypassing.

TWEED SAND BYPASSING:

Tweed Sand Bypassing is a joint project of the New South Wales and Queensland Governments, with the support of the City of Gold Coast, and in conjunction with the Tweed Shire Council.

REVISION	DATE	DESCRIPTION	DRAWN	DRAWING NUMBER	SHEET
	2021-09-06	REV 0	JF	2021-025	1
	2021-09-07	REV 1	MH		
	2021-09-13	REV 2	MH		
				DRAWING PRODUCED BY: HYDROSPHERE CONSULTING WWW.HYDROSPHERE.COM.AU	



TRANSPORT FOR NSW
DEPARTMENT OF ENVIRONMENT
AND SCIENCE (QLD)

TWEED SAND BYPASSING

**LOWER TWEED RIVER DEPTHS
NOVEMBER 2019**